

---

**Infinite™ 200 series: detection solutions that grow with your ideas**

---

Immediate access to all wavelengths in an affordable, scaleable  
detection family

---

## Infinite 200 series

### *New horizons in microplate detection*

The introduction of the Infinite 200 series is Tecan's latest step in widening the access of laboratories to developments in monochromator- and filter-based detection technologies. Whatever your application requirements, the Infinite 200 series offers flexible, scalable detection solutions incorporating all main detection methods in an affordable and easily upgradeable line-up.

#### **Access to a full range of leading detection methods**

















Now, through Tecan's Infinite 200 series, it is possible to use a full range of leading detection technologies in one easy-to-use modular instrument. The user may select from the modules listed in the table below to create the reader for their needs without missing the possibility for future upgrades.

The Quad-4 monochromator design of the Infinite M200 provides best sensitivity and allows the user to select any wavelength from UV to NIR and to perform absorbance, excitation and emission scans. Users can access all wavelengths and change from top to bottom reading, for the easy measurement of multiplexed assays, at the touch of a mouse click – no manual hardware changes are required.

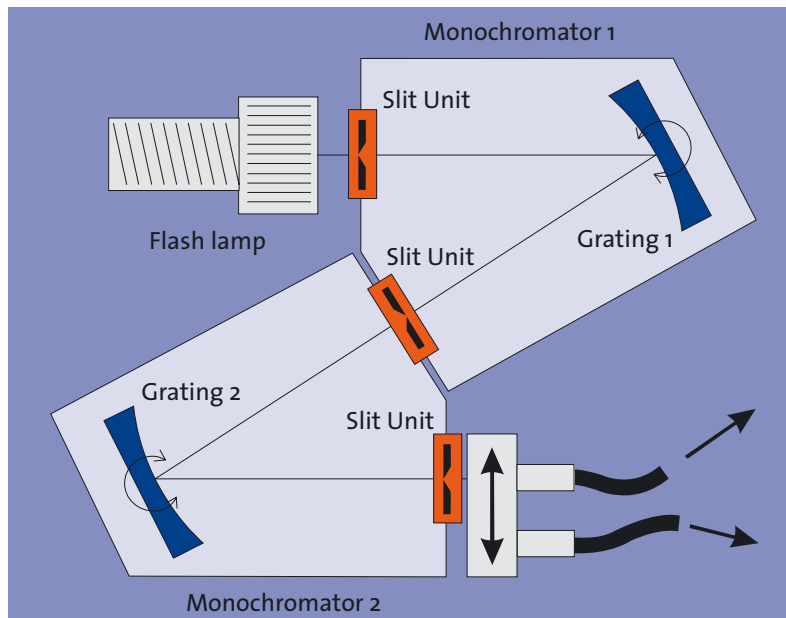
The Infinite F200 uses a patent-pending intelligent filterslide system with integrated lifetime monitoring for the filters. Its fluorescence polarization module is perfectly equipped for binding studies in homogenous mix and read assays and the filter modules offer a cost efficient alternative for routine applications at fixed wavelengths.

#### **Infinite M200 – Monochromator**

#### **Infinite F200 – Filter**

	Fluorescence intensity top reading incl Time Resolved Fluorescence		Fluorescence intensity top reading incl Time Resolved Fluorescence
	Fluorescence intensity bottom reading incl Time Resolved Fluorescence		Fluorescence intensity bottom reading incl Time Resolved Fluorescence
	Spectrally enhanced photo multiplier tube		Spectrally enhanced photo multiplier tube
	Absorbance		Absorbance
	Photon counting luminescence incl dual color luminescence		Photon counting luminescence incl dual color luminescence
	Cuvette port for absorbance		Fluorescence polarization
	Temperature control		Temperature control
	Injectors		Injectors

Select your new application, customize your detection device and perform your measurements quickly and easily



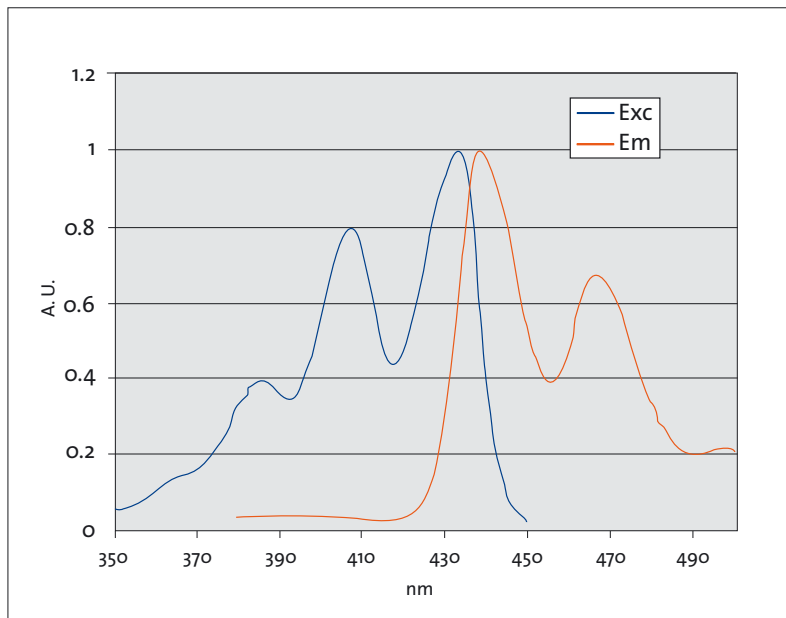
Quad-4 monochromator design for flexibility in wavelength and best performance.

**Broadly applicable modular detection solutions to widen application capabilities**

Detection is at the heart of measuring change in biopharmaceutical and diagnostic assays. In today's rapidly changing application environment, cost-effective and expandable systems permit fast wavelength selection together with a host of easily upgradeable detection options.

The Infinite 200 series is designed to deliver accuracy and performance in a format that allows you to build a versatile detection system that matches your changing application needs. With the M200 Quad-4 monochromator-based and F200 filter-based detection options, the Infinite 200 series offers up to eight detection modes for sample measurements in 6 to 384-well plates, PCR plates or cuvettes. The Infinite 200 series offers unlimited flexibility for a wide range of biological assays and measurements including:

- DNA / RNA quantification
- protein quantification
- ion channel studies
- ion flux studies
- reporter gene assays
- cell viability and toxicity assays
- binding studies
- enzyme assays
- immunoassays



Typical excitation and emission scan.

## Module and quality control features

### Module features

The modules available with the Infinite M200 and F200 provide the following features:

- the spectrally enhanced PMT which extends the emission wavelength range from 330 – 600 nm to 280 – 850 nm allows to use red-shifted dyes, which minimize interference by auto-fluorescence phenomena
- a UV Si photodiode absorbance detector for the wavelength range 230 nm up to 1000 nm provides excellent sensitivity also at low concentrations
- a luminescence module capable of reading dual color luminescence assays with a photon counting detector to detect the lowest light levels from an assay
- temperature control for cellular- & biochemical assays, which require a defined temperature range

The Infinite M200 can read a standard 1 cm x 1 cm cuvette and low volume microcuvettes in an upright position for both fixed wavelength and scanning spectrophotometric measurements within the 230 nm to 1000 nm wavelength range

### Injector module

The state-of-the-art injector module allows the use of up to two injectors which can dispense reagents, replacing a manual pipetting step, or trigger fast kinetic reactions in fluorescence, luminescence and absorbance modes. The injectors have variable volume and speed settings and can be used in combination with the ratio mode to allow fast switching of wavelengths for a wide range of applications. The maintenance of the injectors is supported by easily accessible prime / wash buttons.

### Built-in performance features

The Infinite 200 series has been designed to support users who need to meet Good Laboratory Practice standards. A MultiCheck QC-plate, which includes installation and operational (IQ OQ) checks and documentation, helps you ensure that all Infinite 200 devices meet the standards needed for quality control laboratories, as well as for scientists that need to assure production standards in pharma and biotech settings.



Optional cuvette port on Infinite M200 for spectrophotometric measurements.



Injector module with up to two injectors and buttons for prime and wash.



The MultiCheck quality control package allows to test the reader performance without the need for liquid handling.

## Software designed for your workflow

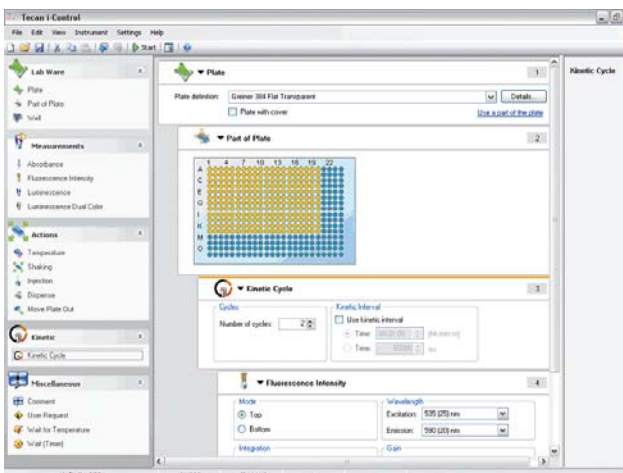
The Infinite 200 series comes complete with an easy-to-use i-control™ software interface that allows the user to define the workflow for each application. Each workflow is easily created by dragging and dropping the processing steps into a sequence according to the assay protocol. The application workflow is then visible to the user and can be saved for future use. Data are easily managed and exported to Windows® compatible formats (Excel®).

If more advanced data processing or calculation is needed, Tecan's proven Magellan™ software delivers features for all microplate formats used in the Infinite 200 series of detection devices.

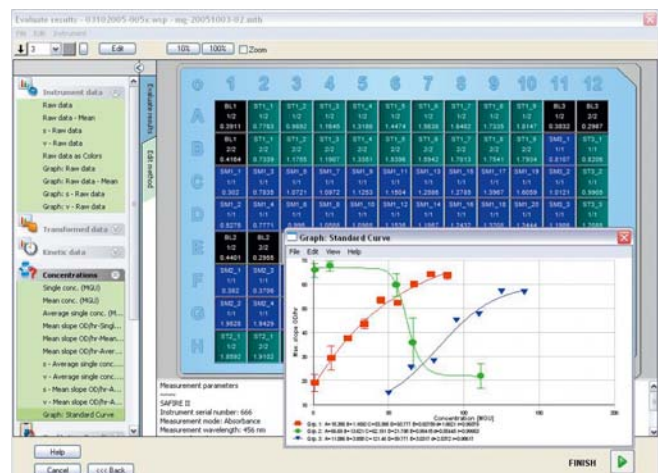
Highlights of new Magellan software in combination with the Infinite 200 series include:

- Application oriented workflow definition via drag & drop functionality Wizard guided application definition for intuitive operation and less training effort
- Excel-style definition of transformations for easy transformation of data into results
- Advanced spectra calculation package – the perfect partner for your Infinite M200 reader
- Convenient handling of dilution series and ICx calculations
- Predefined example files for a range of applications help you to get started immediately
- Comprehensive plate library for fast selection of your favorite microplate

Magellan Tracker is designed to meet 21 CFR Part 11 requirements for electronic records and electronic signatures in compliance with FDA regulations. In this way, users have complete access to intuitive software solutions that match their detection needs.



Workflow oriented i-control software supports complex assay protocols.



Easy presentation and evaluation of data from multiple experimental groups on a microplate.

## Infinite M200 and F200 – Typical performance values

<b>Light Source</b>	UV Xenon flashlamp	
<b>Wavelength selection</b>	Quad-4 monochromator system (2 excitation and 2 emission monochromators)	
<b>Infinite M200</b>	Quad-4 monochromator system (2 excitation and 2 emission monochromators)	
– Bandwidth	Ex: < 5 nm for $\lambda \leq 295$ nm and < 9 nm for $\lambda > 295$ nm; Em: < 20 nm	
– Wavelength accuracy	< $\pm 2$ nm for $\lambda > 295$ nm; < $\pm 1$ nm for $\lambda \leq 295$ nm	
– Wavelength reproducibility	< $\pm 1$ nm	
<b>Infinite F200</b>	Up to 4 filter pairs per slide	
<b>Wavelength range</b>		
Fluorescence intensity	Standard: Ex 230 – 600 nm, Em 330 – 600 nm Optional: Ex 230 – 850 nm, Em 280 – 850 nm	
Fluorescence polarization	Standard: Ex 300 – 600 nm; Em 330 – 600 nm Optional: Em 330 – 850 nm	
Absorbance	230 – 1000 nm	
<b>Detectors</b>	Fluorescence – PMT, optionally UV and red-sensitive Absorbance – UV Silicon photodiode Luminescence – photon counting system with low dark current PMT	
<b>Plate formats</b>	6 to 384 well plates, cuvettes	
<b>Temperature control</b>	Ambient +5 °C up to 42 °C	
<b>Shaking</b>	Linear, orbital	
<b>Fluorescence sensitivity* values</b>	<b>Infinite F200</b>	<b>Infinite M200</b>
Fluorescence top reading**	0.5 fmol / well	1 fmol / well
Fluorescence bottom reading**	5 fmol / well	9 fmol / well
TRF**	90 amol / well	
FP	< 5 mP standard deviation @ 1 nM Fluorescein	N / A
<b>Luminescence sensitivity* values</b>		
Glow luminescence	1 fmol ATP / well	
Flash luminescence	< 80 amol ATP / well	
<b>Absorbance</b>		
Accuracy @492 nm	< $\pm (1\% + 0.010$ OD)	
Measurement range	0 – 3 OD	
<b>Injectors</b>		
Pump speed	100 – 300 $\mu$ l / s	
<b>Injection volume</b>	selectable in 1 $\mu$ l increments; max. volume: 800 $\mu$ l per stroke	
Dead volume	100 $\mu$ l including pump back	
<b>Fastest Read Times</b>		
96 well plate	20 sec	
384 well plate	30 sec	
Wavelength Ex / Em-scan,	150 sec	
96 well plate 450 – 550 nm, 5 nm step		

\* Sensitivity values are calculated according to the IUPAC standard: 3\*standard deviation of blank / slope

\*\* Utilizing red sensitive PMT

Tecan Group Ltd. makes every effort to include accurate and up-to-date information within this publication, however, it is possible that omissions or errors might have occurred. Tecan Group Ltd. cannot, therefore, make any representations or warranties, expressed or implied, as to the accuracy or completeness of the information provided in this publication. Changes in this publication can be made at any time without notice. All mentioned trademarks are protected by law. For technical details and detailed procedures of the specifications provided in this document please contact your Tecan representative. This brochure may contain reference to applications and products which are not available in all markets. Please check with your local sales representative.

© 2007, Tecan Trading AG, Switzerland, all rights reserved.

Tecan is in major countries a registered trademark of Tecan Group Ltd., Männedorf, Switzerland  
Infinite 200, i-control and Magellan are trademarks of Tecan Group Ltd., Männedorf, Switzerland  
Windows and Excel are registered trademarks of Microsoft Corporation, Redmond, WA, USA

**Austria** T +43 62 46 89 33 **Belgium** T +32 15 42 13 19 **China** T +32 15 42 13 19 **Denmark** +45 70 23 44 50 **France** +33 4 72 76 04 80 **Germany** +49 79 51 94 170  
**Italy** +39 02 215 21 28 **Japan** +81 44 556 73 11 **Netherlands** +31 18 34 48 174 **Portugal** +351 21 000 82 16 **Singapore** +65 644 41 886 **Spain** +34 93 490 01 74  
**Sweden** +46 31 75 44 000 **Switzerland** +41 44 922 89 22 **UK** +44 118 9300 300 **USA** +1 919 361 5200 **ROW** +43 62 46 89 33

www.tecan.com

394 069 V3.0, 06-2007

